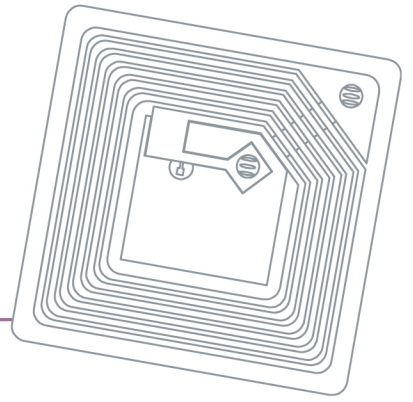


CCR

CCR-USB

RFID Reader

Contactless Card Reader / Writer



RFID (Radio Frequency Identification)



ISO14443A / ISO14443B / ISO15693 Protocol Support



NXP(Philips) Mifare Function Support



USB Port Interface (No Required Powersupply)



Human Interface Device Class



Keyboard Emulator Support

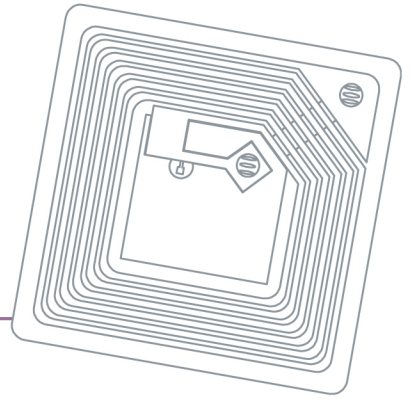


Virtual Serial Port Interface Support

CCR

RFID Reader

Contactless Card Reader / Writer



Specifications

Input Voltage	USB bus power DC5V	Read Range	Up to 5Cm
Input Current	100mA (typical)	Material	ABS Plastic
Frequency	13.56 Mhz	Weight	85g
Modulation	ASK	Color	White
Operation Temperature Range	-10 °c ~ +65 °c	Indicator	Blue/Red LED, Buzzer

USB Class Interface

HID class No Required Device Driver	USB Keyboard Emulator (Plug and Play)
	USB HID Communication (SDK Support)
CDC class	Create Virtual Serial Port (RS232 Programming)

Dimension

